

ROBOTICS

Product manual, spare parts

IRBT 2005



Trace back information:
Workspace 23C version a13
Checked in 2023-09-29
Skribenta version 5.5.019

Product manual, spare parts

IRBT 2005

IRC5

Document ID: 3HAC051132-001

Revision: D

The information in this manual is subject to change without notice and should not be construed as a commitment by ABB. ABB assumes no responsibility for any errors that may appear in this manual.

Except as may be expressly stated anywhere in this manual, nothing herein shall be construed as any kind of guarantee or warranty by ABB for losses, damage to persons or property, fitness for a specific purpose or the like.

In no event shall ABB be liable for incidental or consequential damages arising from use of this manual and products described herein.

This manual and parts thereof must not be reproduced or copied without ABB's written permission.

Keep for future reference.

Additional copies of this manual may be obtained from ABB.

Original instructions.

© Copyright 2014-2023 ABB. All rights reserved.
Specifications subject to change without notice.

Table of contents

Overview of this manual	7
Product documentation	8
1 Drive unit	11
2 Carriage bracket	13
3 Stand unit	15
4 Cable chain	17
4.1 Internal cable chain	17
4.2 External cable chain	18
5 Cable tray	19
6 Automatic lubrication system	21
7 Cabling	23
7.1 Flexible cables	23
7.1.1 Overview	23
7.1.2 Robot track cables	24
7.1.3 Transfer track cables	26
7.1.4 STD customer cables and hoses	27
7.1.5 Arc welding package cables and hoses	28
7.1.6 Arc welding cables and hoses	29
7.1.7 FlexLifter cables and hoses	30
7.1.8 Lubrication sensor cables	31
7.2 Floor cables	32
Index	35

This page is intentionally left blank

Overview of this manual

About this manual

This manual contains spare parts for:

- IRBT 2005

Usage

This manual shall be used as a complement to the Product manual during:

- maintenance work
- repair work.

Who should read this manual?

This manual is intended for:

- maintenance personnel
- repair personnel.

Prerequisites

Maintenance/repair/installation personnel working with an ABB Robot must:

- be trained by ABB and have the required knowledge of mechanical and electrical installation/repair/maintenance work.

References

Reference	Document ID
<i>Product manual - IRBT 2005</i>	<i>3HAC051130-001</i>
<i>Product manual - IRB 1520</i>	<i>3HAC043435-001</i>
<i>Product manual - IRB 1600/1660</i>	<i>3HAC026660-001</i>
<i>Circuit diagram - IRB 2600</i>	<i>3HAC029570-007</i>
<i>Product manual - IRB 4600</i>	<i>3HAC033453-001</i>

Revisions

Revision	Description
-	First edition.
A	Published in release R17.2. The following updates are made in this revision: <ul style="list-style-type: none"> • Added FlexLifter cables and hoses.
B	Published in release R18.1. The following updates are made in this revision: <ul style="list-style-type: none"> • Changed the spare part number of the IRBT 2005 power cable whose cable length is 14 m from 3HAC046925-005 to 3HAC046925-003. • Updated cable tray spare parts.
C	Published in release R22B. The following updates are made in this revision: <ul style="list-style-type: none"> • Updated spare part numbers of straight adaptor in automatic lubrication system, FlexLifter switch cables and lubrication sensor cables.
D	Published in release R23C. The following updates are made in this revision: <ul style="list-style-type: none"> • Updated spare part number of lubrication carriage cable.

Product documentation

Categories for user documentation from ABB Robotics

The user documentation from ABB Robotics is divided into a number of categories. This listing is based on the type of information in the documents, regardless of whether the products are standard or optional.



Tip

All documents can be found via myABB Business Portal, www.abb.com/myABB.

Product manuals

Manipulators, controllers, DressPack, and most other hardware is delivered with a **Product manual** that generally contains:

- Safety information.
- Installation and commissioning (descriptions of mechanical installation or electrical connections).
- Maintenance (descriptions of all required preventive maintenance procedures including intervals and expected life time of parts).
- Repair (descriptions of all recommended repair procedures including spare parts).
- Calibration.
- Troubleshooting.
- Decommissioning.
- Reference information (safety standards, unit conversions, screw joints, lists of tools).
- Spare parts list with corresponding figures (or references to separate spare parts lists).
- References to circuit diagrams.

Technical reference manuals

The technical reference manuals describe reference information for robotics products, for example lubrication, the RAPID language, and system parameters.

Application manuals

Specific applications (for example software or hardware options) are described in **Application manuals**. An application manual can describe one or several applications.

An application manual generally contains information about:

- The purpose of the application (what it does and when it is useful).
- What is included (for example cables, I/O boards, RAPID instructions, system parameters, software).
- How to install included or required hardware.
- How to use the application.

Continues on next page

- Examples of how to use the application.

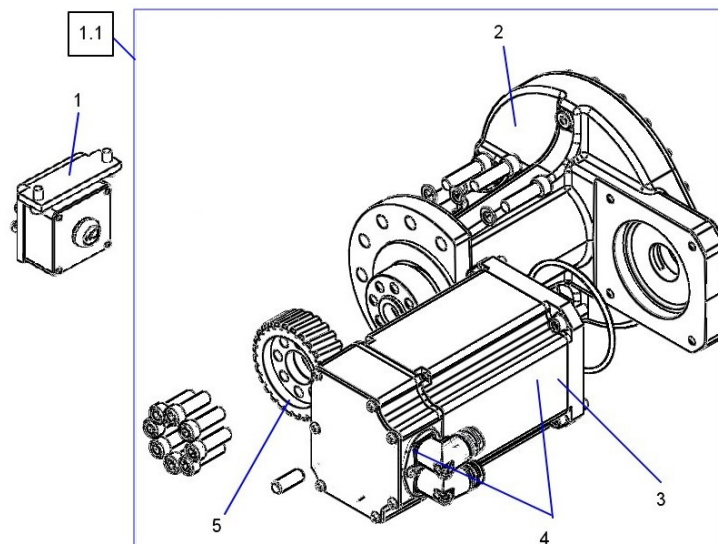
Operating manuals

The operating manuals describe hands-on handling of the products. The manuals are aimed at those having first-hand operational contact with the product, that is production cell operators, programmers, and troubleshooters.

This page is intentionally left blank

1 Drive unit

Illustration



xx140000591

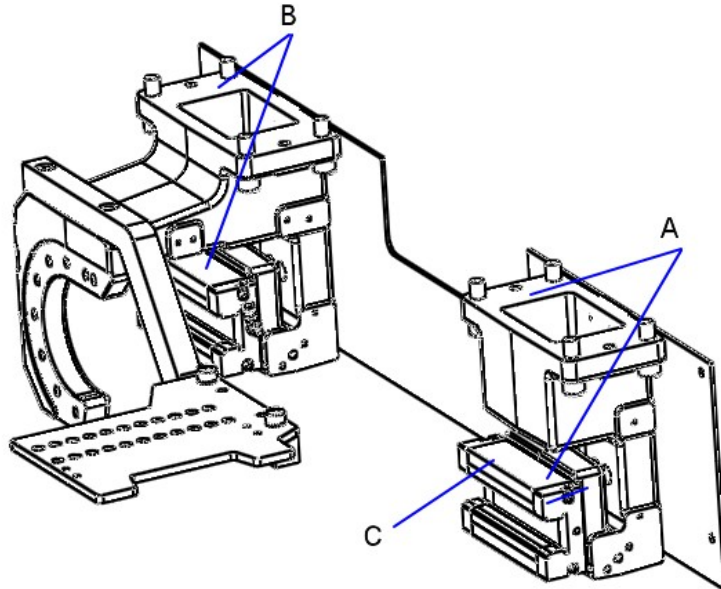
Spare part list

Item	Quantity	Part number	Description	Dimension/Note
1	1	3HAC051538-002	Brake release unit	
1.1	1	3HAC053121-003	Drive train, MTM	The part number is for either the independent drive train or the complete drive train including motors and gears.
2	1	3HAC047334-002	Gearbox	Including 330 ml lubricating oil XP320 (11712016-604).
3	1	3HAC051522-003	Motor and pinion	
4	1	3HAC051523-003	Motor unit	Including connection box
5	1	3HAC047375-001	Pinion on rack	

This page is intentionally left blank

2 Carriage bracket

Illustration



xx140000594

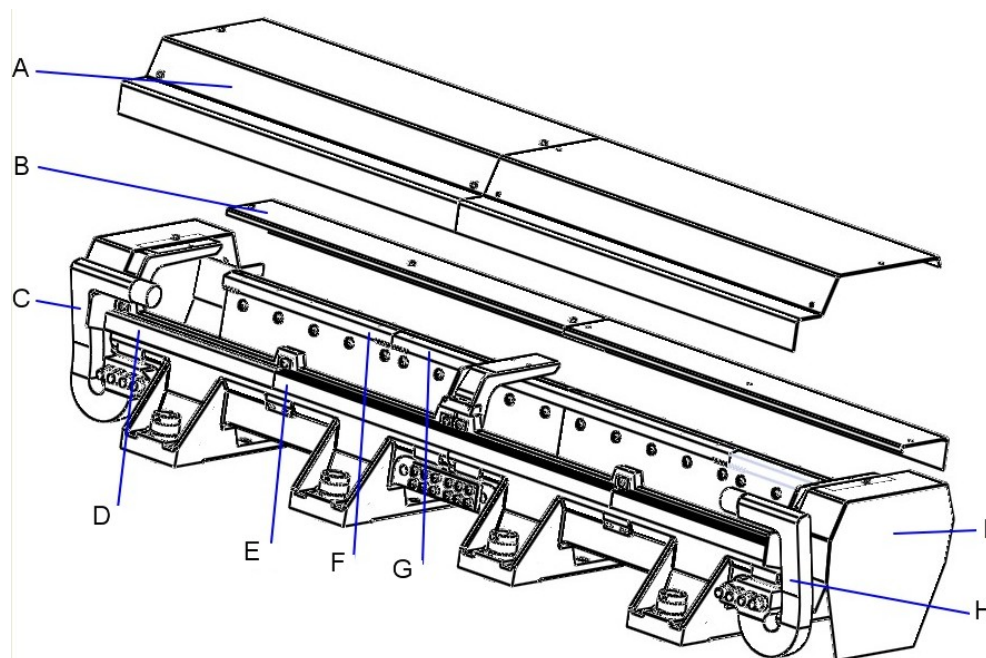
Spare part list

Item	Quantity	Part number	Description	Dimension/Note
A	1	3HAC051509-001	Linear guide unit	3 pcs, for carriage base with 4 holders.
	1			5 pcs, for carriage base with 6 holders.
B	1	3HAC051510-003	Drive train linear guide unit	The part number for the complete drive drain and linear guide unit.
C	1	3HAC042192-001	Runner block size 45	
D	1	3HAC052540-001	Calibration set	

This page is intentionally left blank

3 Stand unit

Illustration



xx140000593

Spare part list

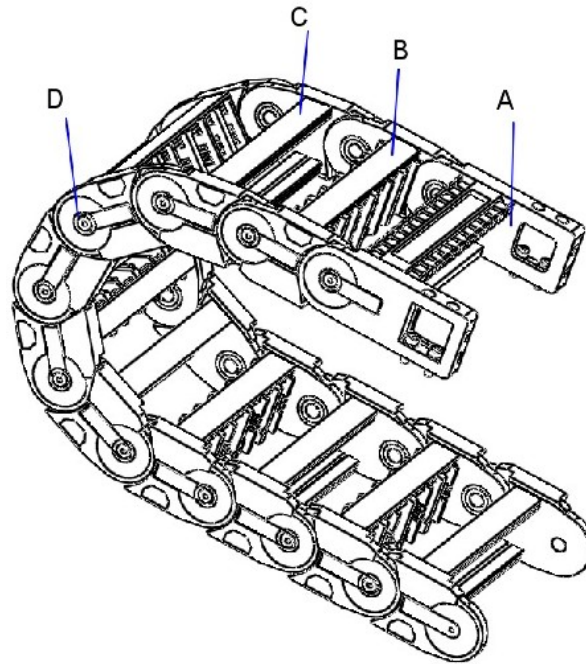
Item	Quantity	Part number	Description	Dimension/Note
A	1	3HAC047660-001	Top cover	
B	1	3HAC047661-001	Rack cover	
C	1	3HAC052880-003	M-stop, left unit	
D	1	3HAC045755-002	Rail_45, 500 mm	
E	1	3HAC045755-001	Rail_45, 1000 mm	
F	1	3HAC045735-001	Rack 500 mm	
G	1	3HAC045754-001	Rack 1000 mm	
H	1	3HAC052881-003	M-stop, right unit	
I	1	3HAC047829-001	End cover	

This page is intentionally left blank

4 Cable chain

4.1 Internal cable chain

Illustration



xx140000479

Spare part list

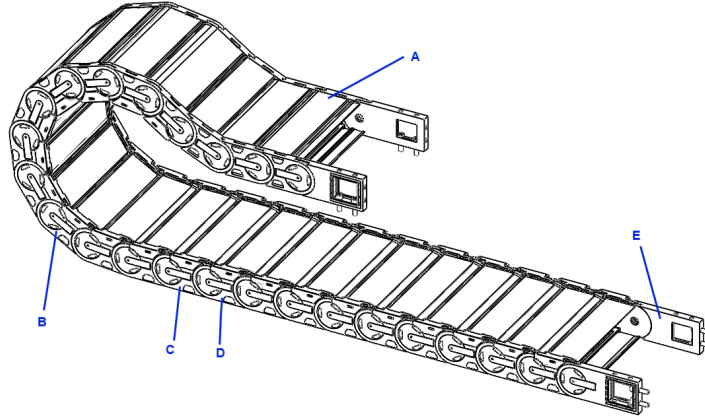
Item	Quantity	Part number	Description	Dimension/Note
A	1	3HAC051561-001	Cable chain end unit	For internal cable chain
B	1	3HAC047832-001	Cable chain pitch, with divider	For internal cable chain
C	1	3HAC047833-001	Cable chain pitch, no divider	For internal cable chain
D	1	3HAC051565-001	Cable chain, 10 links	For internal cable chain

4 Cable chain

4.2 External cable chain

4.2 External cable chain

Illustration



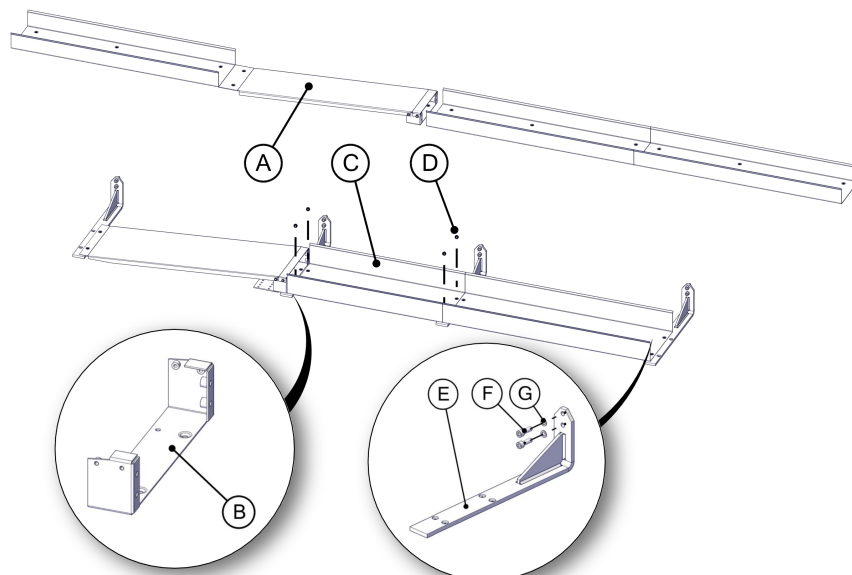
xx1500000757

Spare part list

Item	Quantity	Part number	Description	Dimension/Note
A	1	3HAC045110-001	Bracket plastic 246mm moving part	For external cable chain
B	1	3HAC045102-001	Cable chain plastic 246mm 10 links	For external cable chain
C	1	3HAC051431-001	Ext chain pitch, with divider	For external cable chain
D	1	3HAC051432-001	Ext chain pitch, no divider	For external cable chain
E	1	3HAC045816-001	Chain bracket	For external cable chain

5 Cable tray

Illustration



xx180000046

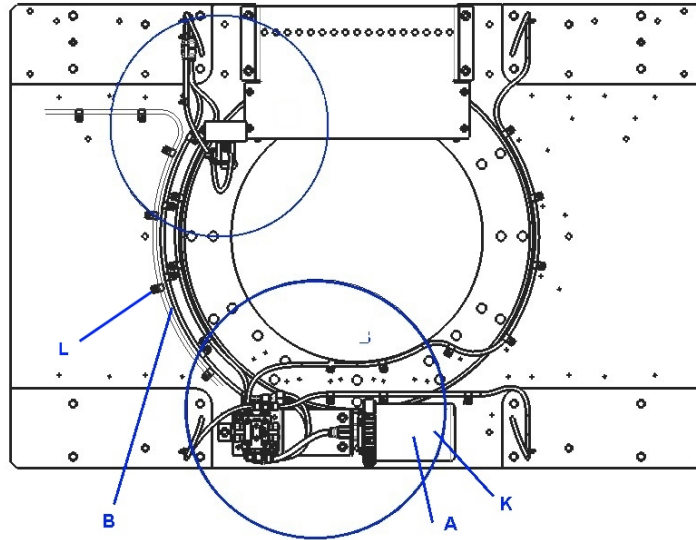
Spare part list

Item	Quantity	Part number	Description	Dimension/Note
A	1	3HAC047746-001	Cable tray, 1 m	For internal cable tray
B	1	3HAC051309-001	External chain raiser	For external cable tray
C	1	3HAC051313-003	External cable tray, 1.45 m	For external cable tray
D	4	9ADA624-55	M6x12 Torx counters. head screw	For external cable tray
E	1	3HAC047756-001	Bottom bracket for external cable tray	For external cable tray
F	2	3HAB3409-51	M10x30 Hex socket head cap screw	For external cable tray
G	2	3HAB4233-1	Washer	For external cable tray

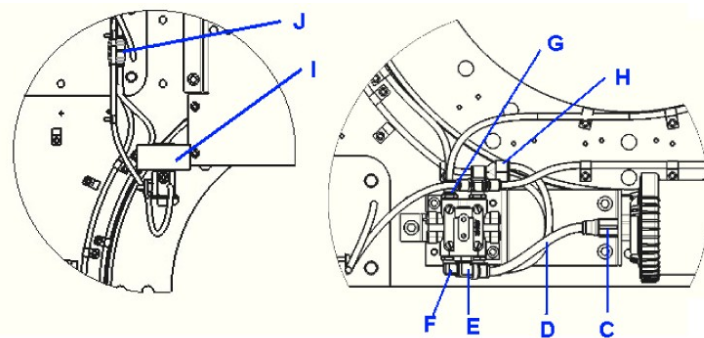
This page is intentionally left blank

6 Automatic lubrication system

Illustration



xx150000470



xx150000471

Spare part list

Item	Quantity	Part number	Description
A	1	3HAC047758-001	Lubrication pump EPS 240
B	1	3HAWC116981	Polyamide tube 4x6
C	1	3HAW050040387	Straight adaptor F1/4-Ø8
D	1	3HAWC116982	Polyamide tube 6x8
E	1	3HAWC110551	Male stud elbow (white brass) D8 G1/4
F	1	3HAWC115765	Male stud elbow (white brass) D6 G1/8
G	1	3HAWC116550	Male stud straight (white brass) D6 G1/8
H	1	3HAWC102542	Y fitting Ø6-Ø6

Continues on next page

6 Automatic lubrication system

Continued

Item	Quantity	Part number	Description
I	1	3HAC048545-001	Inline fitting Ø6
J	1	3HAC052317-001	Felt gear set
K	1	3HAC048539-001	Grease package 240 CC
L	1	3HAWC107872	Flange

7 Cabling

7.1 Flexible cables

7.1.1 Overview

General

Flexible cables are mounted in the cable chain of the track. The tables in following sections show the cable lengths required for different connections with different travel lengths. The cables are divided as follows:

- IRB power cables: handles power supply to the motors of the robot.
- IRBT 2005 power cables: handles power supply to the motor of the track.
- IRB/IRBT 2005 signal cables: handles feedback from the serial measurement board.
- Position switch cables: handles supply to and feedback from position switches, if any.
- Customer cables: handles communication with equipment fitted on robot.
- Arc welding cables: handles communication/power with the power source on carriage.

7 Cabling

7.1.2 Robot track cables

7.1.2 Robot track cables

IRB power cables

Travel length (m) with no specified robot pedestal	Travel length (m) with specified robot pedestal	Cable length (m)	IRB 1520 3HAC046920-	IRB 1600 3HAC046921-	IRB 2600/4600 3HAC046924-
1-5	1-3	6	006	006	006
6-9	4-7	8	001	001	001
10-13	8-11	10	007	007	007
14-17	12-15	12	002	002	002
18-20	16-20	15	003	003	003

IRBT 2005 power cables

Travel length (m)	Cable length (m)	J1.XP7-M7, 3HAC046925-
1-5	6	001
6-10	8.5	006
11-15	11	002
16-20	14	003

IRB signal cables

Travel length (m) with no specified robot pedestal	Travel length (m) with specified robot pedestal	Cable length (m)	IRB 1520/1600/2600/4600 3HAC029834-
1-5	1-3	6	001
6-9	4-7	8	003
10-13	8-11	10	005
14-17	12-15	12	007
18-20	16-20	15	010

IRBT 2005 signal cables

From	Cable length (m)	R1.FB7-FB	FB Cable Box-Motor (FB7-M7)
IRB 1520 FB7	3	3HAC046926-001	-
IRB 1600/2600/4600 FB7	3	-	3HAC039602-001

Grounding cables

Travel length (m)	Cable length (m)	Cable grounding 3HAC046927-
1-5	6	001

Continues on next page

Travel length (m)	Cable length (m)	Cable grounding 3HAC046927-
6-10	8.5	005
11-15	11	002
16-20	14	003

7 Cabling

7.1.3 Transfer track cables

7.1.3 Transfer track cables

IRBT 2005 power cables

Travel length (m)	Cable length (m)	Box-Motor 3HAC039603-
1-5	6	015
6-10	8.5	016
11-15	11	013
16-20	14	014

IRBT 2005 signal cables

Travel length (m)	Cable length (m)	FB Cable Box-Motor (FB7-M7) 3HAC039602-
1-5	6	013
6-10	8.5	014
11-15	11	011
16-20	14	012

Grounding cables

Travel length (m)	Cable length (m)	3HAC046927-
1-5	6	001
6-10	8.5	005
11-15	11	002
16-20	14	003

7.1.4 STD customer cables and hoses

Customer cables, IRB 1600

Travel length (m) with no specified robot pedestal	Travel length (m) with specified robot pedestal	Cable length (m)	CP/CS 3HAC046922-
1-5	1-3	6	006
6-9	4-7	8	001
10-13	8-11	10	007
14-17	12-15	12	002
18-20	16-20	15	003

Customer cables, IRB 2600/4600

Travel length (m) with no specified robot pedestal	Travel length (m) with specified robot pedestal	Cable length (m)	CP/CS/Parallel 3HEA801277-	CP/CS/DeviceNet/Can 3HEA801279-	CP/CS/Profibus 3HEA801280-	ProfiNet cable flex 3HAC032951-
1-5	1-3	6	002	002	002	001
6-9	4-7	8	004	004	004	003
10-13	8-11	10	006	006	006	005
14-17	12-15	12	009	009	008	007
18-20	16-20	15	012	012	011	010

Customer hoses, IRB 1600/2600/4600

Travel length (m)	Cable length (m)	CP/CS-AIR 3HAC046923-
1-5	6	001
6-10	8.5	005
11-15	11	002
16-20	14	003

Customer hose floor, IRB 1600/2600/4600

Cable length (m)	CP/CS-AIR floor 3HAC046933-
3	001

7 Cabling

7.1.5 Arc welding package cables and hoses

7.1.5 Arc welding package cables and hoses

Arc welding package cables

Travel length (m)	Cable length (m)	DeviceNet cable 3HAC046928-	Welding current cable 3HAC050223-	Welder power cable 3HAC046929-	TSC cable 3HAC046932-
1-5	6	001	001	001	001
6-10	8.5	006	004	005	006
11-15	11	002	002	002	002
16-20	14	003	003	003	003

Arc welding package hoses

Travel length (m)	Cable length (m)	Air hose 3HAC046931-
1-5	6	001
6-10	8.5	005
11-15	11	002
16-20	14	003

7.1.6 Arc welding cables and hoses

Arc welding package cables

Cable length (m)	DeviceNet cable_ RPC 3HAC046939-	Welding current cable 3HAC046940-	TSC cable 3HAC046941-
3	001	001	-
5	-	-	001

Arc welding package hoses

Cable length (m)	Air and gas hose_ RPC 3HAC051850-	Air hose 3HAC046937-	Gas hose 3HAC046936-	TSC hose 3HAC046942-
3	001	005	005	-
5	-	-	-	001

7 Cabling

7.1.7 FlexLifter cables and hoses

7.1.7 FlexLifter cables and hoses

FlexLifter switch cables

Travel length (m)	Cable length (m)	Mechanical position switch cable 3HAW050008654-	Inductive proximity switch cable
1-5	8	008	3HAC078308-001
6-10	10	010	3HAC078287-001
11-15	12	012	3HAC078309-001
16-20	15	015	3HAC078306-001

FlexLifter motor cables

Travel length (m)	Cable length (m)	FlexLifter power cable 3HAC058603-	FlexLifter signal cable 3HAC058606-
1-5	8	001	001
6-10	10	002	002
11-15	12	003	003
16-20	15	004	004

FlexLifter FieldBus cables

Travel length (m)	Cable length (m)	Profinet/ProfiBus power cable 3HAC058670-	Profinet signal cable 3HAC058671-	ProfiBus signal cable 3HAC058675-	Ethernet-IP/DeviceNet power cable 3HAC058672-	Ethernet-IP signal cable 3HAC058673-	DeviceNet signal cable 3HAC058674-
1-5	8	001	001	001	001	001	001
6-10	10	002	002	002	002	002	002
11-15	12	003	003	003	003	003	003
16-20	15	004	004	004	004	004	004

FlexLifter hoses

Travel length (m)	Cable length (m)	Flexcable air hose 3HAC046923-
1-5	8.5	005
6-10	11	002
11-15	14	003
16-20	16	006

7.1.8 Lubrication sensor cables**Lubrication sensor cables**

Travel length (m)	Cable length (m)	Lubrication flexible cable	Lubrication carriage cable
1-5	8	3HAC078308-001	3HAC077180-001
6-10	10	3HAC078287-001	
11-15	12	3HAC078309-001	
16-20	15	3HAC078306-001	

7 Cabling

7.2 Floor cables

7.2 Floor cables

Overview

Fixed cables are connected between the control equipment and the track motion. The tables specify cables for the track motion. As for the manipulator cables, same cables are used as when connecting the manipulator directly to the control equipment. Further information about the manipulator cables are found in the Product Manual for the manipulator.

Robot track power cables

Cable length (m)	IRBT XP7-J1.XS7 3HEA802402-
7	001
15	002
22	003

Transfer track cables IRC5 to SMB (floor)

Cable length (m)	3-SMB box XP7-XS50 3HAC054112-	Control cable 66/7600 3HAC026787-	Control cable signal 3HAC2493-	Control cable signal 3HAC2530-	Control cable signal 3HAC2540-	MU/SMB box 3axis with brake release 3HAC040106-	6 Axis SMB box 3HAC049479-
7	001	001	1	-	-	-	-
15	002	002	-	1	-	-	-
22	003	003	-	-	1	-	-
3AXIS	-	-			-	001	-
6AXIS	-	-			-	-	001

Transfer track cables SMB to track (floor)

Cable length (m)	Extension Power Cable Box-Motor 3HAC052872-	Extension FB Cable Box-Motor 3HAC052873-
5	001	001
10	002	002
15	003	003

STD customer cables and hoses

Cable length (m)	CP/CS-AIR (floor) 3HAC046933-
7	002
15	003
22	004

Continues on next page

Arc welding package cables and hoses

Cable length (m)	DeviceNet cable (floor) 3HAC046934-	Welding current cable (floor) 3HAC053948-	Welder power cable (floor) 3HAC046935-	TSC cable (floor) 3HAC046938-	Gas hose (floor) 3HAC046936-	Air hose (floor) 3HAC046937-
7	001	001	001	001	001	001
15	002	002	002	002	002	002
22	003	003	003	003	003	003

This page is intentionally left blank

Index

A

automatic lubrication system, 22

C

cable chain

external cable chain, 18

internal cable chain, 17

cable tray, 19

cabling

fixed cable, 32

flexible cable, 23

carriage bracket, 13

D

drive unit, 11

S

stand unit, 15



ABB AB

Robotics & Discrete Automation

S-721 68 VÄSTERÅS, Sweden

Telephone +46 10-732 50 00

ABB AS

Robotics & Discrete Automation

Nordlysvegen 7, N-4340 BRYNE, Norway

Box 265, N-4349 BRYNE, Norway

Telephone: +47 22 87 2000

ABB Engineering (Shanghai) Ltd.

Robotics & Discrete Automation

No. 4528 Kangxin Highway

PuDong New District

SHANGHAI 201319, China

Telephone: +86 21 6105 6666

ABB Inc.

Robotics & Discrete Automation

1250 Brown Road

Auburn Hills, MI 48326

USA

Telephone: +1 248 391 9000

abb.com/robotics